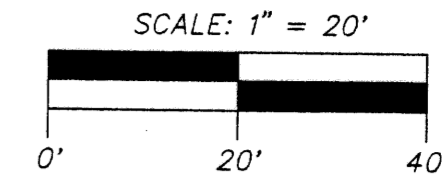


OCEAN CITY LOFTS

BEING A REPLAT OF LOTS 9, 10, 11 AND 12, BLOCK 91 AND LOTS 1, 2, 3, 4 AND 5, BLOCK 99, RESUBDIVISION OF BLOCKS 91 AND 92 AND THE WEST 1/2 OF BLOCK 99, TOWN OF LINTON (NOW DELRAY BEACH), (PLAT BOOK 2, PAGE 21), SECTION 16, TOWNSHIP 46 SOUTH, RANGE 43 EAST, CITY OF DELRAY BEACH, PALM BEACH COUNTY, FLORIDA

SHEET 2 OF 2
JUNE 2003



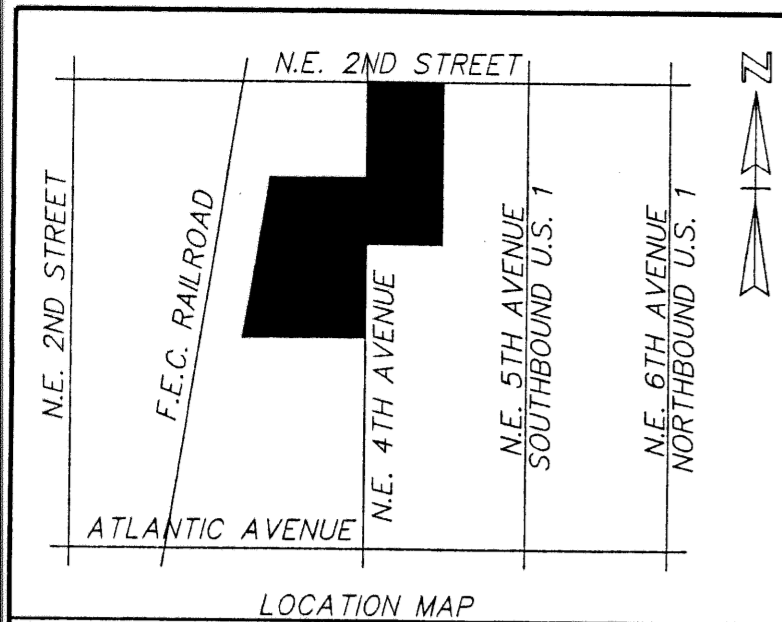
COUNTY OF PALM BEACH
STATE OF FLORIDA

THIS PLAT WAS FILED FOR RECORD AT _____
THIS _____ DAY OF _____
20____ AND DULY RECORDED IN PLAT BOOK NO. _____
ON PAGE _____
DOROTHY H. WILKEN, CLERK OF CIRCUIT COURT
BY _____, D.C.

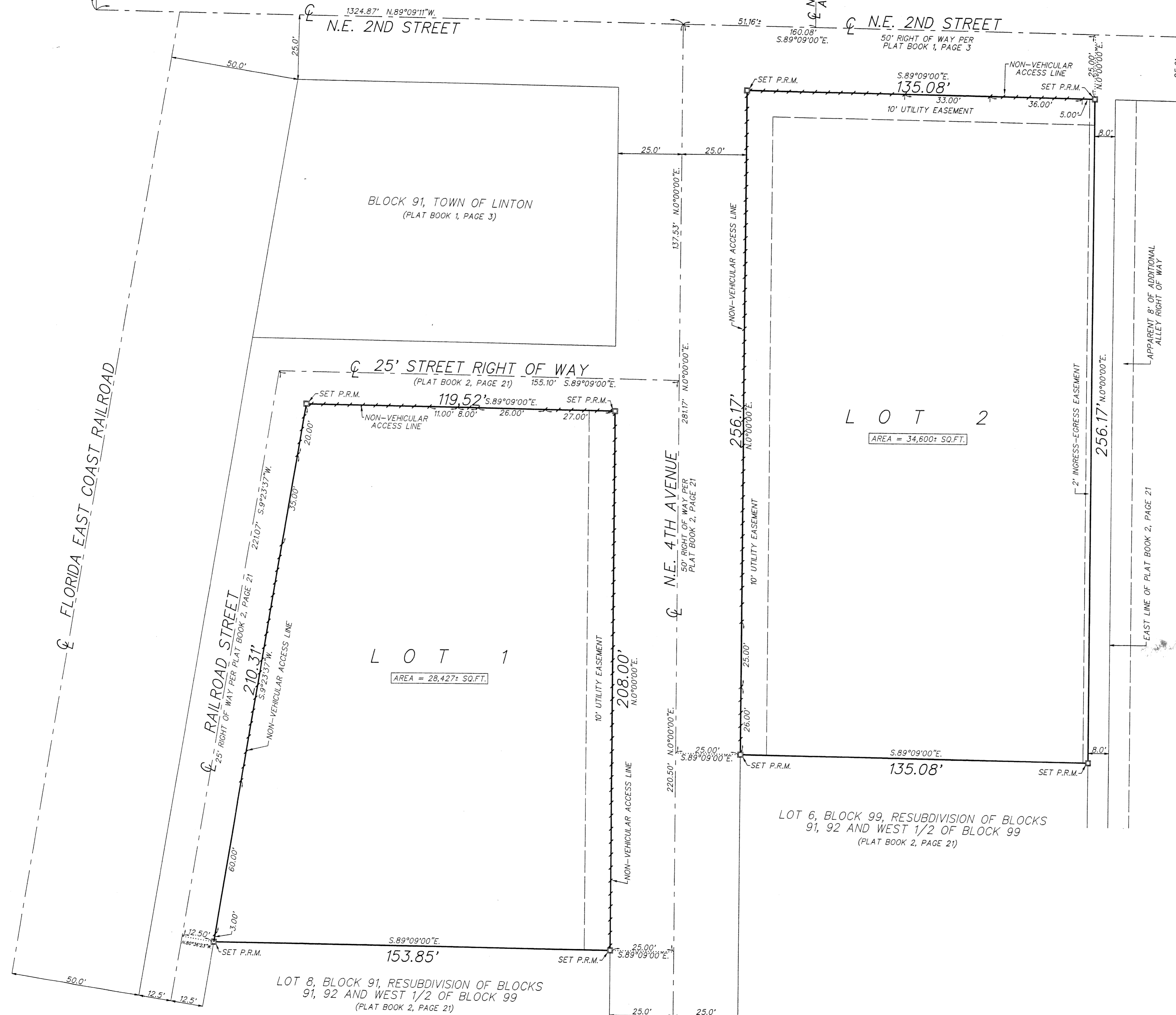
LEGEND:

- ⊕ = CENTERLINE
- PRM = 4"X4" CONC MONUMENT STAMPED "PRM 353"

THIS INSTRUMENT WAS PREPARED BY PAUL D. ENCLE, IN THE OFFICE OF O'BRIEN, SUTER & O'BRIEN, INC., 2601 NORTH FEDERAL HIGHWAY, DELRAY BEACH, FLORIDA 33483 (561) 276-4501



FOUND PALM BEACH COUNTY BRASS DISK AT N.W. CORNER OF SECTION 16, TOWNSHIP 46 SOUTH, RANGE 43 EAST



BLOCK 99, TOWN OF LINTON
(PLAT BOOK 2, PAGE 21)

EAST LINE OF PLAT BOOK 2, PAGE 21
APPARENT 8' OF ADDITIONAL ALLEY RIGHT OF WAY